

**Survey Area: Escambia County segment FLES1-043 and FLES1-017 (NPS Perdido Key)**

**Team Members:**

David Perkinson - FDEP

Jacob Pace - FDEP

**Survey Conditions:**

During today's survey the skies were cloudy, winds were NE @ 10-15 knots, and the seas in the Gulf were 1-2 feet. The tide was low and falling, with low tide (0.85 ft.) at 05:53 AM this morning and high tide (1.12 ft.) at 12:21 PM this afternoon.



Conditions at FLES1-017

**Survey Summary:**

Today FDEP personnel conducted a post-response monitoring survey in Escambia County Divisions 1, segments FLES1-043 and FLES1-017. The conditions in the Gulf of Mexico and Pensacola Bay were ideal for survey of the swash zone, the ITZ and the STZ today. The survey was conducted to verify the presence of BP MC-252 oil and not to mitigate all observed oil.

In both segments there were numerous SRBs throughout the intertidal and swash zones. In segment FLES1-043, many SRBs were found in the swash zone. The USCG was notified as well as filing a NRC report for documentation.

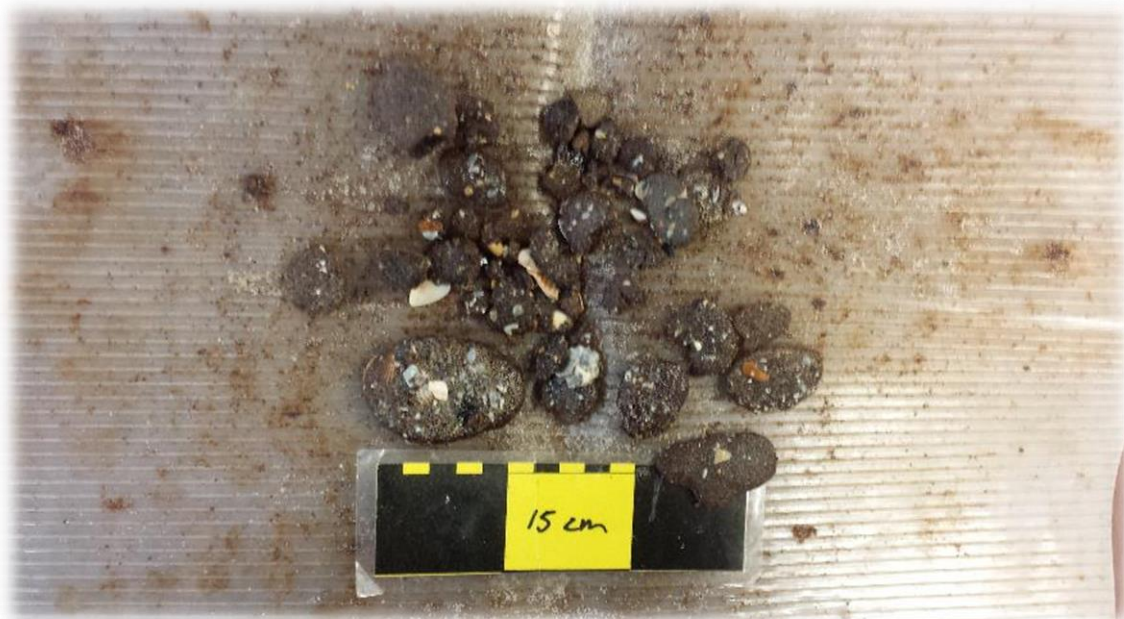
In segment FLES1-017, FDEP personnel surveyed 50 percent of the segment due to strong long-shore current and rough wave conditions. Today's current made it very difficult to collect material today and there were many visible SRBs remaining in the segment at the end of the survey.

There were 236 SRBs and 0.69 lbs. of BP MC-252 material removed from the beach today by FDEP personnel.

### MC-252 Oil Observed

Segment ID	SRBs	SRB Size + SRP Size	SRB Weight (lbs.)	NRC Report #	NRC Followup
FLES1-043	198	1.00 - 4.00	0.34	1096421	TBD
FLES1-017	38	1.00 - 7.00	0.35	1096422	TBD

### Monitoring Photos:



SRBs mitigated from FLES1-017

### Recommendations:

**FLES1-043 and FLES1-017.** Segments have been signed out of the response but continue to yield BP MC-252 material. Recommend further periodic monitoring when weather conditions are favorable for product recovery.

#### ACRONYMS

ES - Entire Segment

EZ - Entire Zone

FLES - Florida Escambia County

FLGU - Florida Gulf County

FOSC - Federal on Scene Coordinator

HBR - Hard Black Rubbery Tar Ball

LITZ - Lower Intertidal Zone

LTZ - Lower Tidal Zone

MTZ - Middle Tidal Zone

NRC - National Response Center

NPS - National Park Service

FLBA - Florida Bay County

FLOK - Florida Okaloosa County

FLWA - Florida Walton County

GUIS - Gulf Islands National Seashore

ITZ - Intertidal Zone

LSTZ - Lower Supra Tidal Zone

MIT - Mitigated

NAS - Naval Air Station

NOO - No Observable Oil

STZ - Supra Tidal Zone